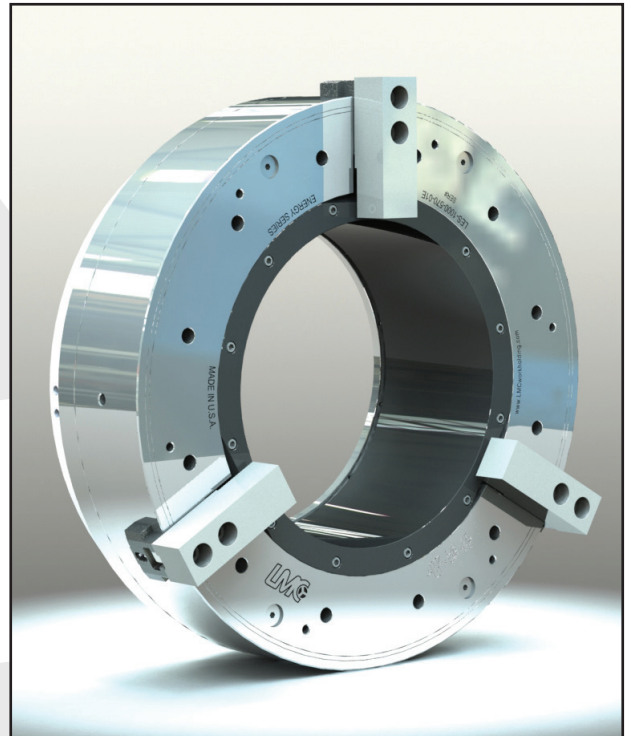




*100 Years of Manufacturing Excellence*

***Energy Series  
Large Bore Air Chucks***  
**— *Made in the USA* —**

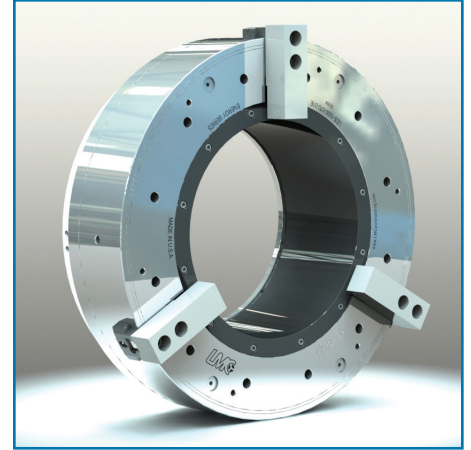


# Energy Series Large Bore Air Chucks — Standard & Extended Jaw Stroke

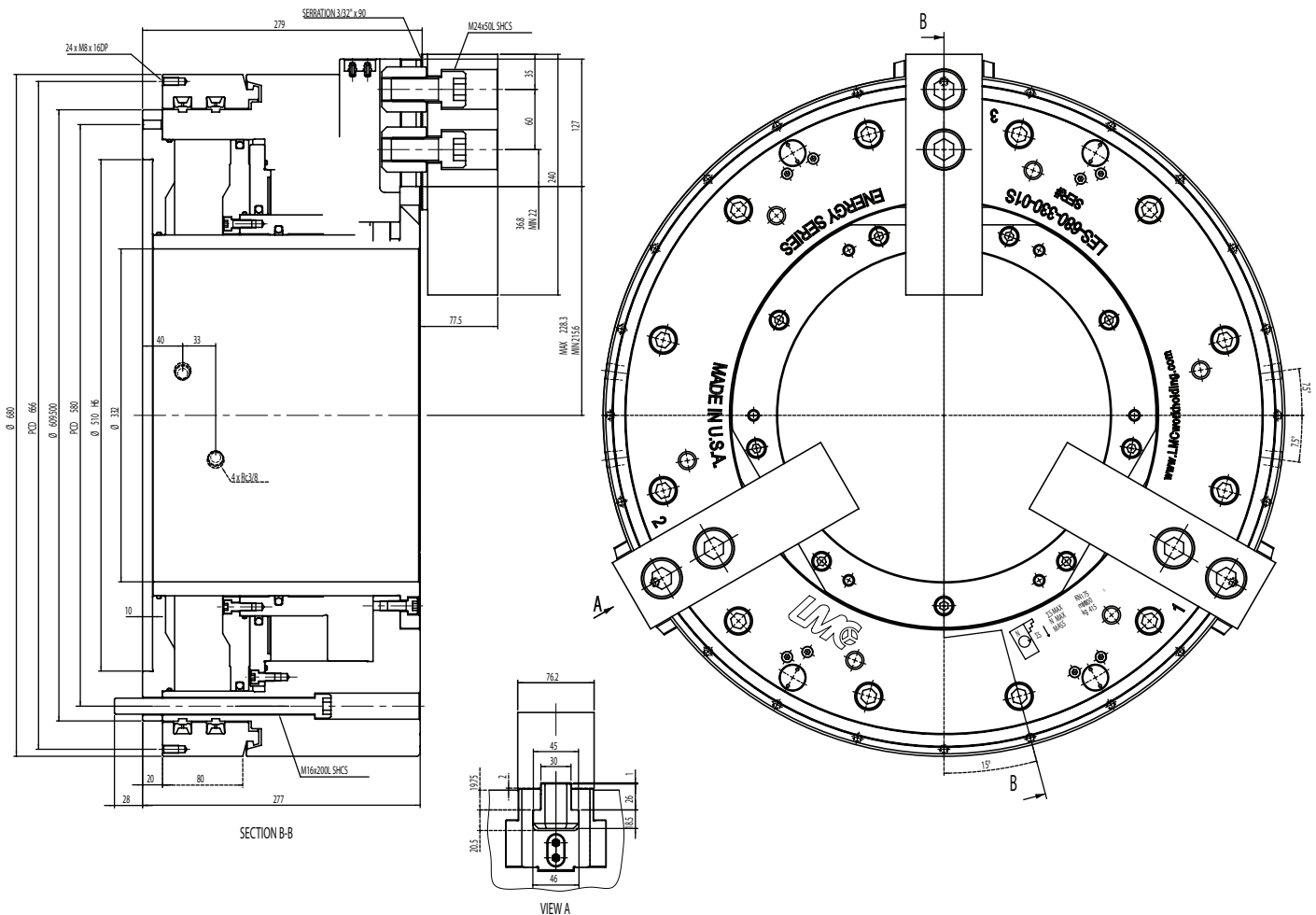
**These large pneumatic chucks feature a built in air cylinder and extra-large thru-hole**

- Full spindle bore of the lathe can be utilized for thru-hole work.
- Machining the ends of long pipes is made easy. Long jaw travel provides more clearance for through feeding pipe.
- Self-contained construction allows chucks to be installed on the front and back of the lathe spindle for producing the highest quality threads.
- Processing pipe with upset ends is made possible with extended jaw stroke chucks. Extended jaw travel features both a rapid and a clamping stroke.
- External or internal clamping of the workpiece is possible.

**LMC Energy Series Chucks are made in the USA in Logansport, Indiana.**



**Available in Standard and Extended Stroke Versions**



STANDARD JAW STROKE							
		425/140	470/191	570/230	680/332	800/410	1000/570
THRU-HOLE	mm	140	191	230	332	410	570
THRU-HOLE	inch	5.51	7.52	9.06	13.07	16.14	22.44
STROKE/JAW	mm	7	7	8.5	12.7	12	12
MIN. PRESSURE	bar	2	2	2	2	2	3
MAX. PRESSURE	bar	8	10	8	8	10	8
PISTON AREA	cm <sup>2</sup>	710	565	940	1119	2064	1075
GRIPPING FORCE @ 6 bar	KN	140	115	190	150	330	180
MAX. SPEED	rpm	1700	1700	1300	1000	750	450
AIR CONSUMPTION	l	20	16	32	6.2	108	85
WEIGHT	kg	150	150	200	468	650	950
MOMENT OF INERTIA	kg*m <sup>2</sup>	3.5	5.66	8	30.4	71.25	157.5
A) BODY DIAMETER	mm	425	470	570	680	800	1000
B) BORE	mm	140	191	230	330	410	570
C) DISTRIBUTOR RING DIA.	mm	470	470	570	680	850	1000
H1) OVERALL LENGTH	mm	223	223	223	277	303	313

EXTENDED JAW STROKE							
		470/191	570/230	680/332	850/410	1000/570	
THRU-HOLE	mm		191	230	332	410	570
THRU-HOLE	inch		7.52	9.06	13.07	16.14	22.44
STROKE/JAW TOTAL	mm		20	25.4	25.4	25.4	25.4
STROKE/JAW RAPID	mm		13	16.9	16.9	14.9	14.9
STROKE/JAW CLAMP	mm		7	8.5	8.5	10.5	10.5
MIN. PRESSURE	bar		2	2	2	3	3
MAX. PRESSURE	bar		10	8	8	8	8
PISTON AREA	cm <sup>2</sup>		565	895	1119	1130	1075
GRIPPING FORCE @ 6 bar	KN		115	170	150	185	180
MAX. SPEED	rpm		1300	1200	1000	750	450
AIR CONSUMPTION	l		22	45	6.2	67	65
WEIGHT	kg		190	270	468	825	955
MOMENT OF INERTIA	kg*m <sup>2</sup>		9.83	12.75	32.4	91.85	158.2
A) BODY DIAMETER	mm		470	570	680	850	1000
B) BORE	mm		191	230	330	410	570
C) DISTRIBUTOR RING DIA.	mm		467	570	680	850	925
H1) OVERALL LENGTH	mm		238	280	277	320	330



**LMC Workholding**  
P.O. Box 7006 • 1200 West Linden Ave.  
Logansport, Indiana 46947-7006  
Phone 574-735-0225 • Fax 574-722-6559  
E-mail: info@LMCworkholding.com

